

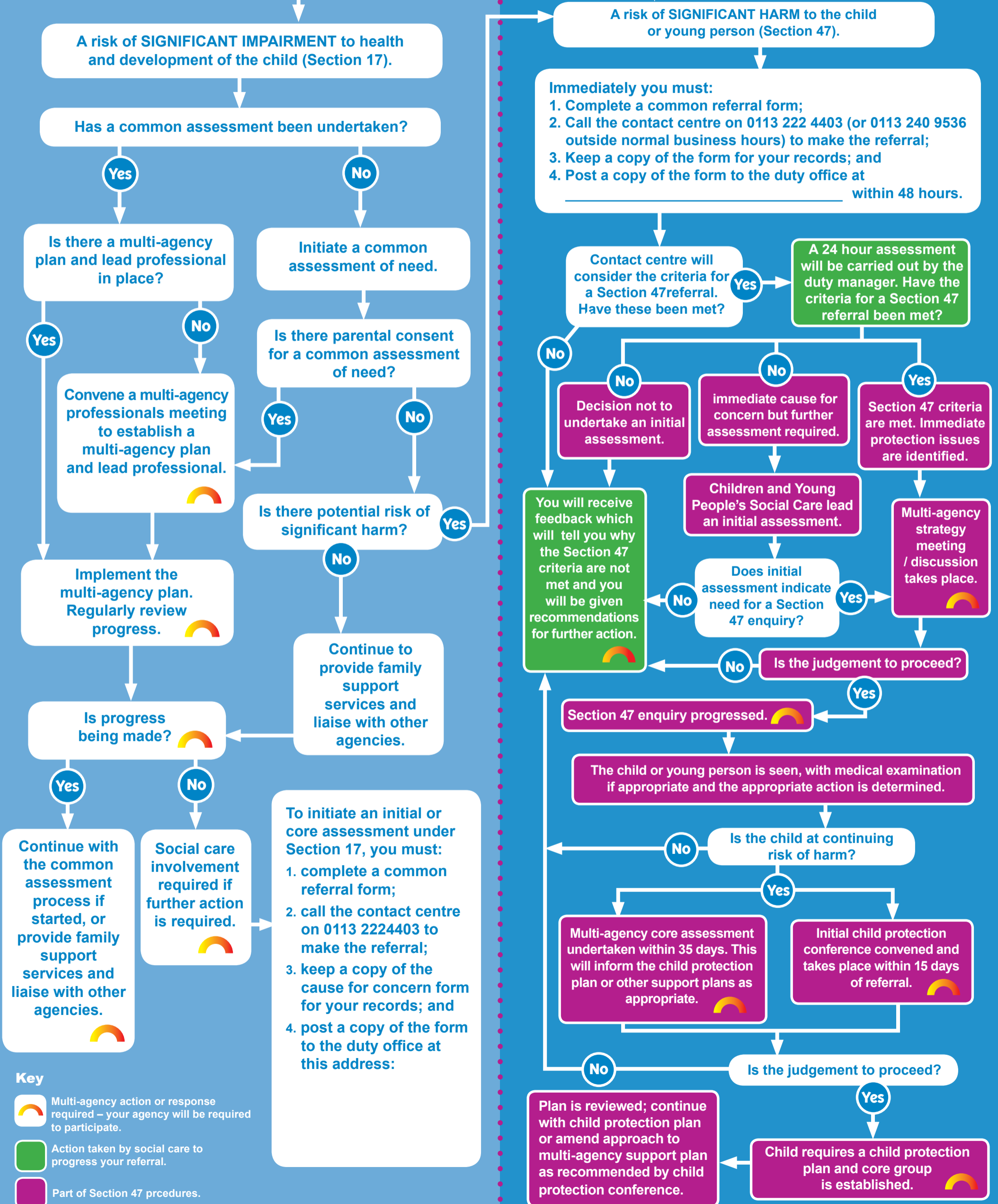
# The referral pathways flowchart

## Children Leads

**Start here**

What to do if you have a concern about a child or young person

Talk to your line manager and/or contact the child protection lead officer for your service or setting. NHS staff should contact their manager, lead professional or named and designated health professional. Your local contact is [redacted] telephone [redacted]. They will work with you to determine if there is:



- Key**
- Multi-agency action or response required – your agency will be required to participate.
  - Action taken by social care to progress your referral.
  - Part of Section 47 procedures.